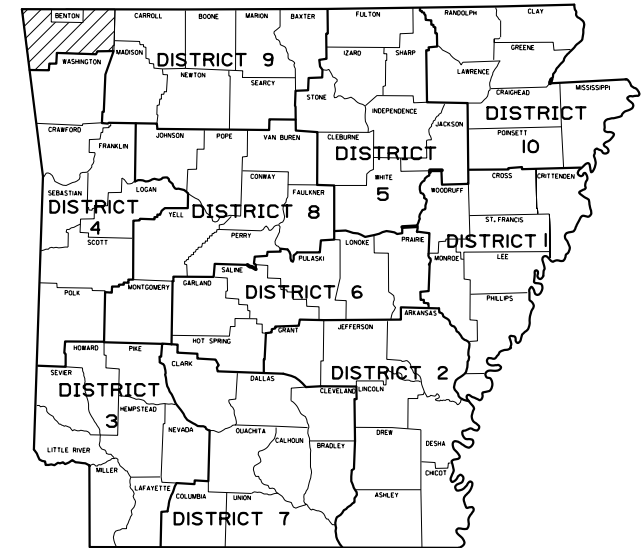


DATE REVISED	DATE REVISED	FED. RD. DIST. NO.	STATE	JOB NO.	SHEET NO.	TOTAL SHEETS
		6	ARK.	21ST0005	1	
RAINBOW CURVE IMPROVEMENTS						

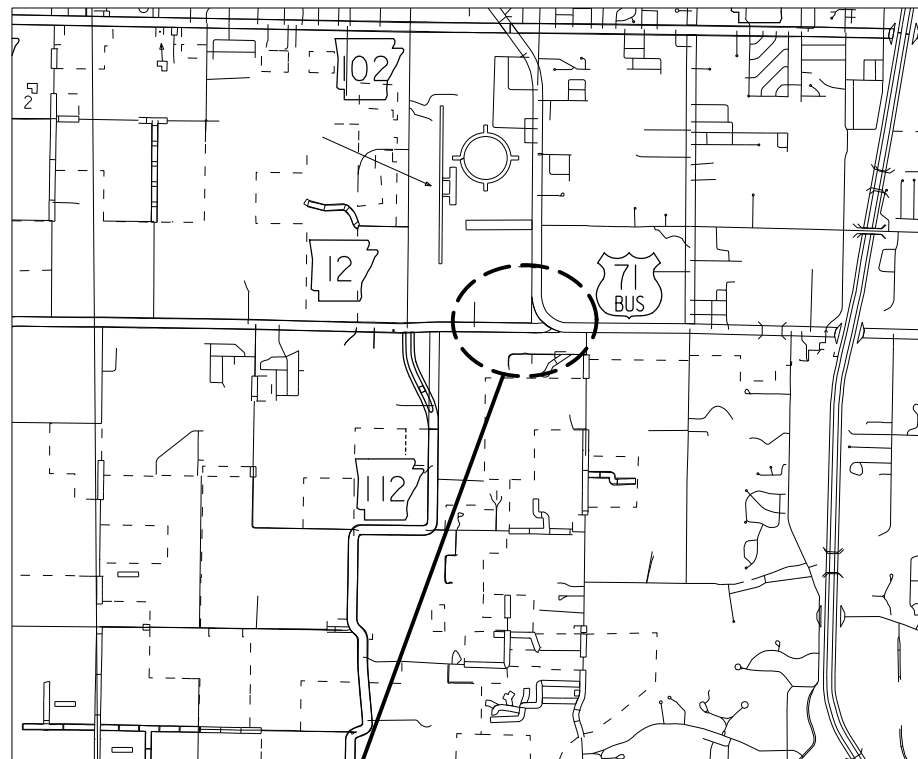
PRELIMINARY  
SUBJECT TO REVISION



ARK. HWY. DIST. NO. 9

DESIGN TRAFFIC DATA

DESIGN YEAR	2043
2023 ADT	22,875
2043 ADT	28,100
2043 DHV	3,091
DIRECTIONAL DISTRIBUTION	0.60
TRUCKS	2.5%
DESIGN SPEED	45 MPH



PROJECT AREA

VICINITY MAP

CITY OF BENTONVILLE  
CONSTRUCTION PLANS FOR CITY STREETS & STATE HIGHWAY

# RAINBOW CURVE IMPROVEMENTS

BENTON COUNTY

S. WALTON BLVD., S.W. REGIONAL AIRPORT BLVD., & HWY. 71B

SECTION 19B

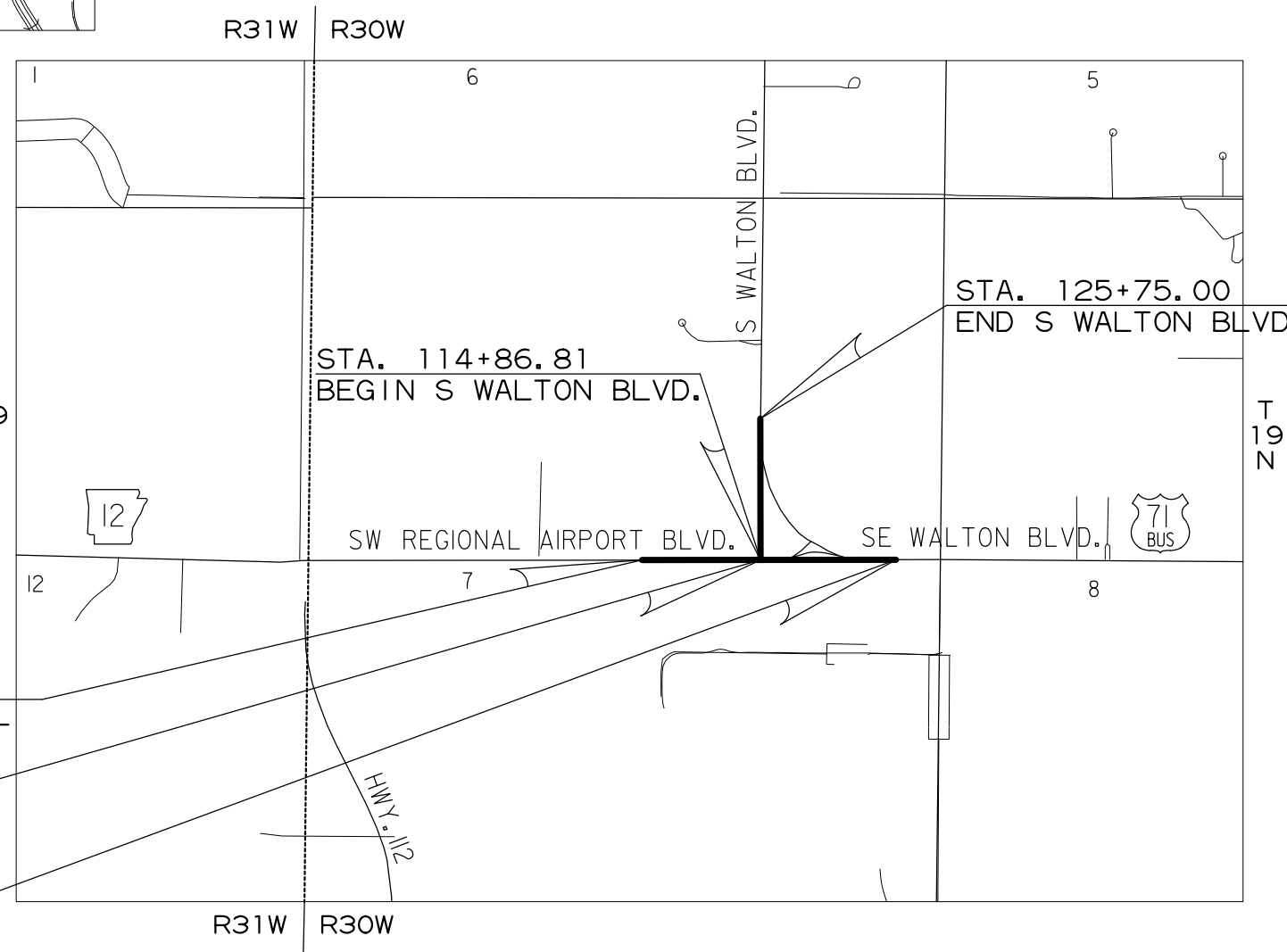
MUNIS # 21ST0005

NOT TO SCALE

STA. 199+22.00  
BEGIN SW REGIONAL  
AIRPORT BLVD.

STA. 209+36.21  
END SW REGIONAL  
AIRPORT BLVD. &  
BEGIN HWY. 71B

STA. 221+50.00  
END HWY. 71B  
LOG MILE 1.312



R31W R30W

LENGTH OF PROJECT CALCULATED ALONG C.L.

GROSS LENGTH OF PROJECT	3316.19 FEET OR	0.628 MILES
NET ROADWAY	3316.19	0.628 MILES
NET BRIDGES	0.00	0.000 MILES
NET PROJECT	3316.19	0.628 MILES

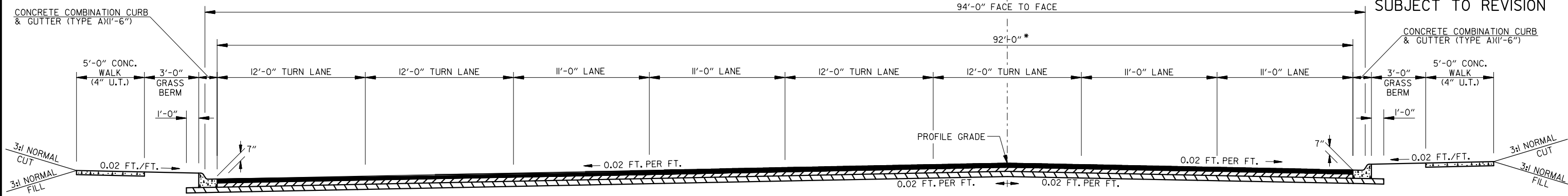
	BEGIN PROJECT	MID-POINT OF PROJECT	END PROJECT
LATITUDE	N 36°20' 08"	N 36°20' 08"	N 36°20' 08"
LONGITUDE	W 94°12' 51"	W 94°12' 38"	W 94°12' 25"

DATE REVISED	DATE REVISED	FED. RD. DIST. NO.	STATE	JOB NO.	SHEET NO.	TOTAL SHEETS
		6	ARK.	21ST0005	2	

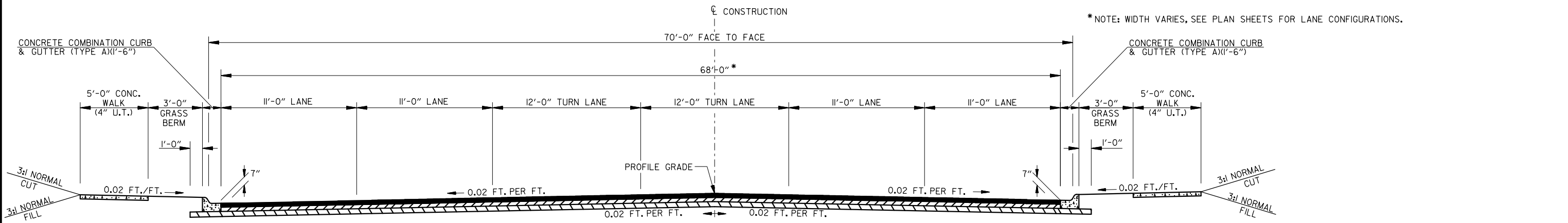
PAVEMENT DESIGN TO BE DETERMINED

\*NOTE: WIDTH VARIES, SEE PLAN SHEETS FOR LANE CONFIGURATIONS.

PRELIMINARY  
SUBJECT TO REVISION

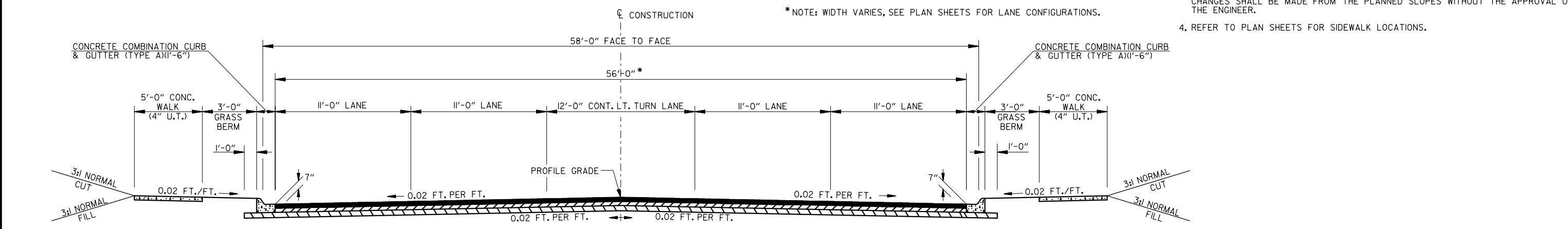


TANGENT SECTION - FULL DEPTH CURB AND GUTTER W/ LT. & RT. TURN LANES  
STA. XXX+XX.XX TO STA. XXX+XX.XX



TANGENT SECTION - FULL DEPTH CURB AND GUTTER W/ LT. TURN LANES  
STA. XXX+XX.XX TO STA. XXX+XX.XX

- NOTES:
1. PRIOR TO AND DURING PLACEMENT OF PAVEMENT IN FRONT OF THE CURB AND GUTTER, THE CONTRACTOR SHALL PROVIDE DRAINAGE AT ALL TIMES. THE METHOD(S) USED SHALL BE APPROVED BY THE ENGINEER. PAYMENT FOR THIS WORK SHALL BE CONSIDERED INCLUDED IN THE PRICE BID FOR THE VARIOUS CONTRACT ITEMS.
  2. THE FINAL 2" OF SURFACE COURSE IS TO BE PLACED AFTER ALL OTHER COURSES HAVE BEEN LAID. LONGITUDINAL JOINTS SHALL BE AT LANE LINES.
  3. REFER TO CROSS SECTIONS FOR DEVIATIONS FROM THE NORMAL SLOPES. NO CHANGES SHALL BE MADE FROM THE PLANNED SLOPES WITHOUT THE APPROVAL OF THE ENGINEER.
  4. REFER TO PLAN SHEETS FOR SIDEWALK LOCATIONS.



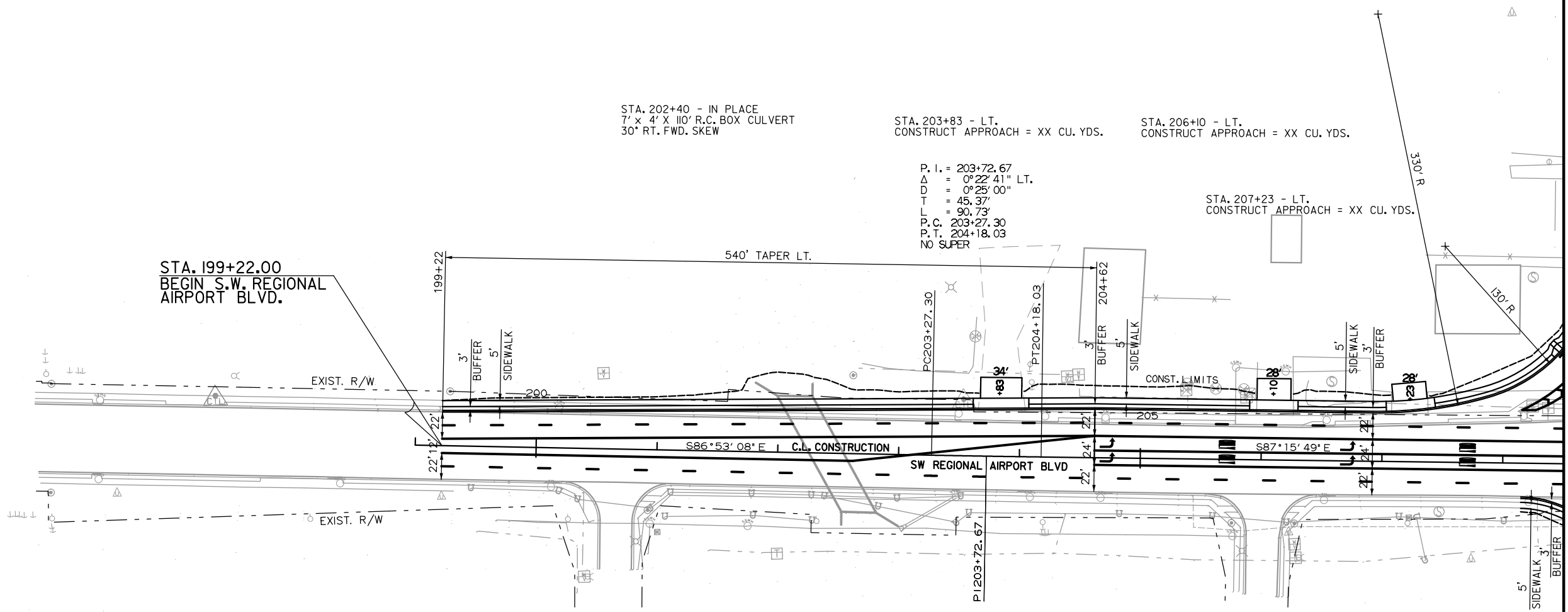
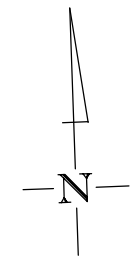
TANGENT SECTION - FULL DEPTH CURB AND GUTTER  
STA. XXX+XX.XX TO STA. XXX+XX.XX

TYPICAL SECTIONS OF IMPROVEMENT

I:\Job\03545500 Bentonville Rainbow Curve Improvements\100 CAD\Files\710 Roadway Files\References\RainbowCurve\_Typical Sections.dgn 7/8/2022 1:29:17 PM

DATE REVISED	DATE REVISED	FED. RD. DIST. NO.	STATE	JOB NO.	SHEET NO.	TOTAL SHEETS
		6	ARK.	21ST0005	3	
PLAN STA. 200+00 TO STA. 208+00						

PRELIMINARY  
SUBJECT TO REVISION



STA. 202+40 - IN PLACE  
7' x 4' x 110' R.C. BOX CULVERT  
30' RT. FWD. SKEW

STA. 203+83 - LT.  
CONSTRUCT APPROACH = XX CU. YDS.

STA. 206+10 - LT.  
CONSTRUCT APPROACH = XX CU. YDS.

P. I. = 203+72.67  
Δ = 0°22'41" LT.  
D = 0°28'00"  
T = 45.37'  
L = 90.73'  
P.C. = 203+27.30  
P.T. = 204+18.03  
NO SUPER

STA. 207+23 - LT.  
CONSTRUCT APPROACH = XX CU. YDS.

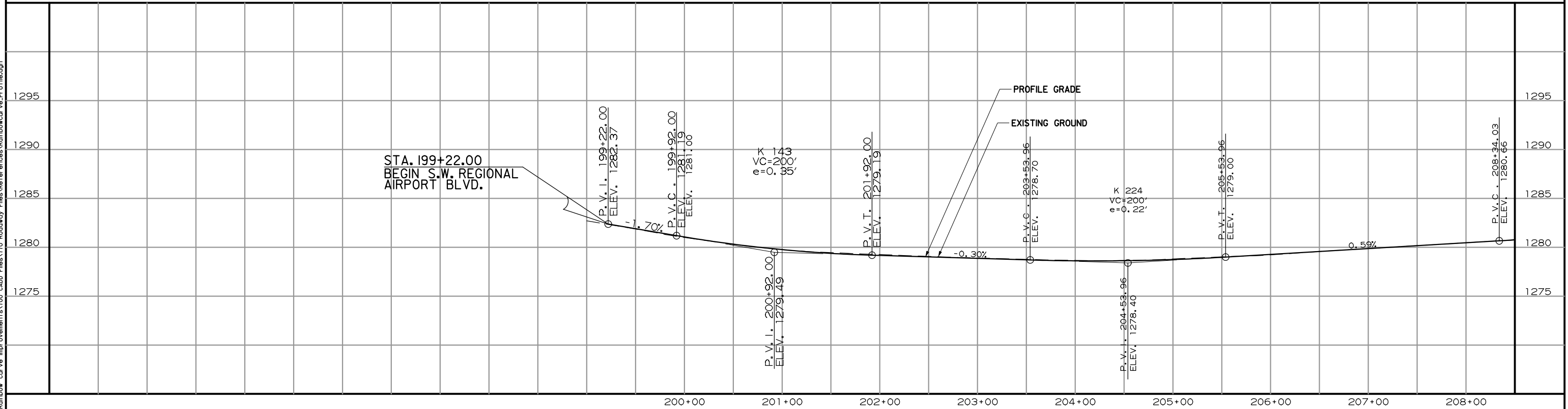
STA. 199+22.00  
BEGIN S.W. REGIONAL  
AIRPORT BLVD.

PLAN  
STA. 200+00 TO STA. 208+00

I:\Job\03545500 Bentonville Rainbow Curve Improvements\100 CAD Files\710 Roadway Files\References\RainbowCurve\_Plan.dgn 7/8/2022 1:33:11 PM

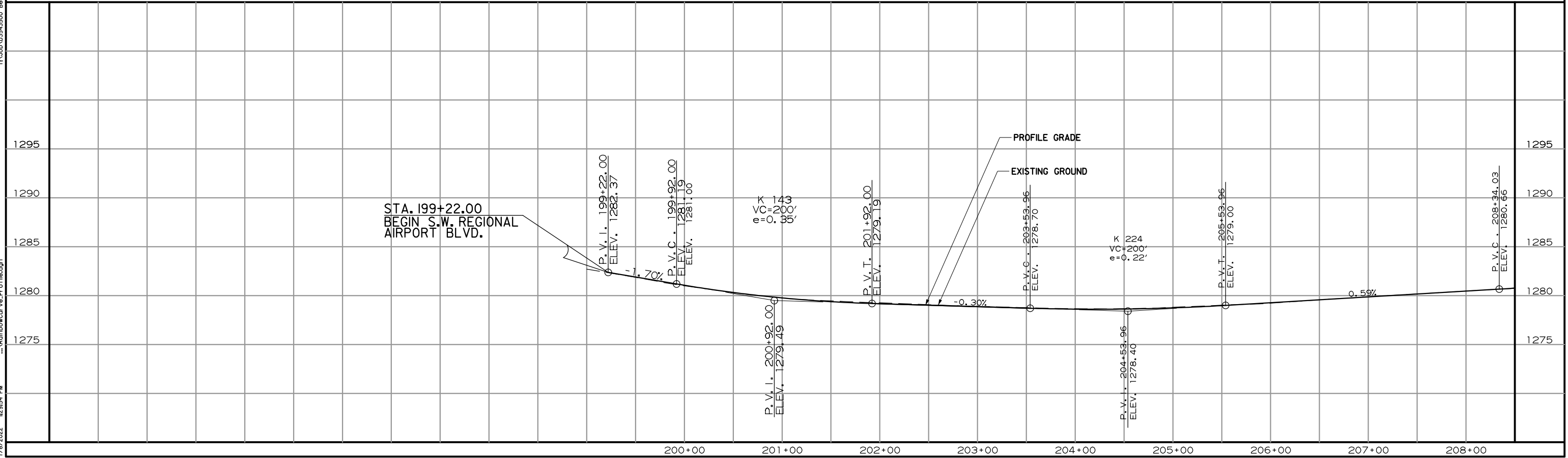
DATE REVISED	DATE REVISED	FED. RD. DIST. NO.	STATE	JOB NO.	SHEET NO.	TOTAL SHEETS
		6	ARK.	21ST0005	4	
PROFILE STA. 200+00 TO STA. 208+00						

**PRELIMINARY**  
SUBJECT TO REVISION  
LT. SIDE



REFER TO SURVEY CONTROL DETAIL SHEETS FOR HORIZONTAL AND VERTICAL CONTROL DATA.

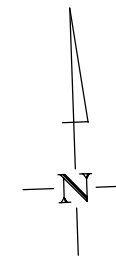
RT. SIDE



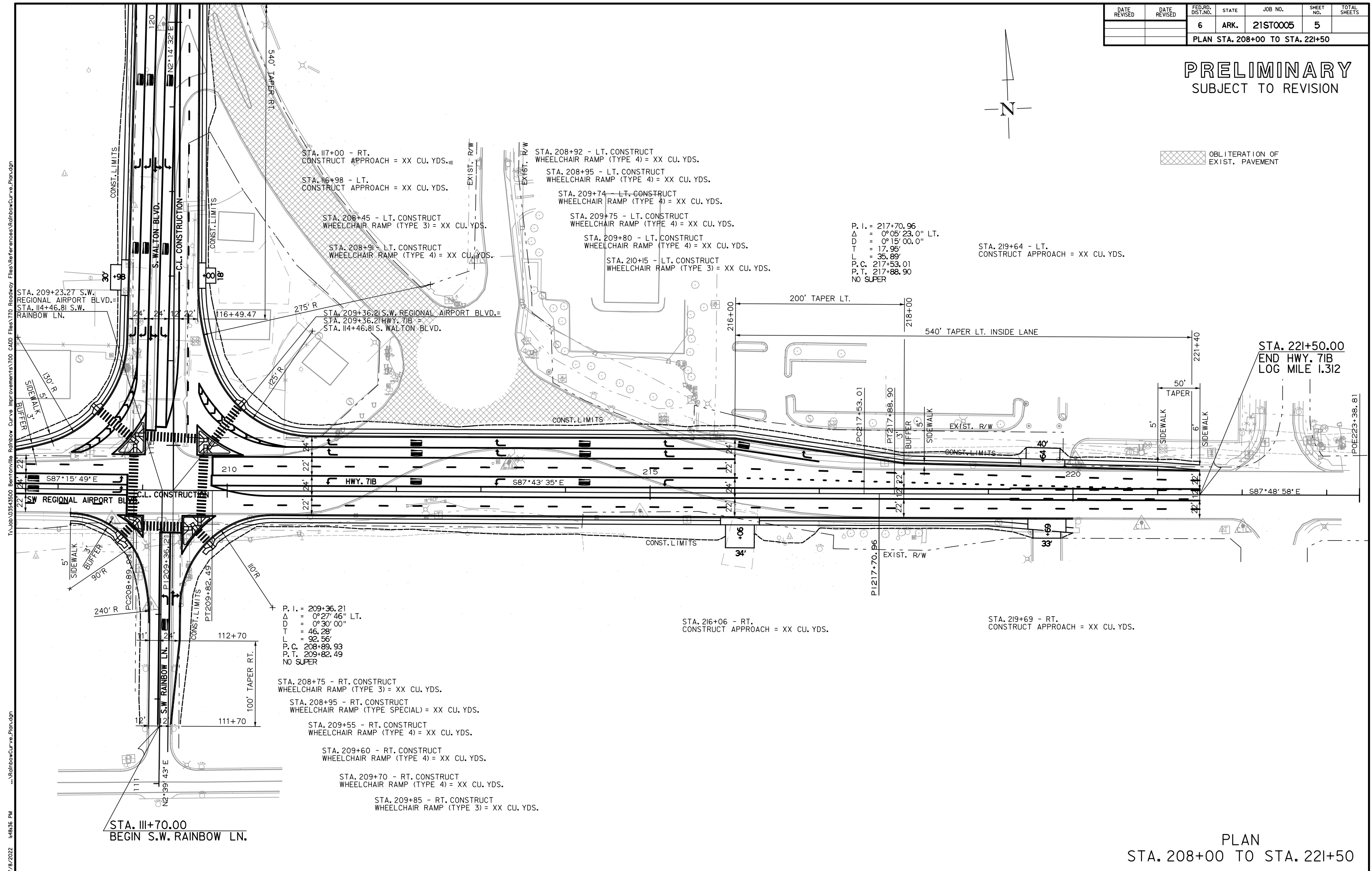
T:\Job\03543500 Bentonville Rainbow Curve Improvements\700 CADD Files\770 Roadway Files\References\RainbowCurve\_Profile.dgn  
7/8/2022 12:29:54 PM

DATE REVISED	DATE REVISED	FED. RD. DIST. NO.	STATE	JOB NO.	SHEET NO.	TOTAL SHEETS
		6	ARK.	21ST0005	5	
PLAN STA. 208+00 TO STA. 221+50						

**PRELIMINARY**  
SUBJECT TO REVISION



OBLITERATION OF EXIST. PAVEMENT



P. I. = 217+70.96  
 $\Delta$  = 0°05'23.0" LT.  
D = 0°15'00.0"  
T = 17.95'  
L = 35.89'  
P.C. = 217+53.01  
P.T. = 217+88.90  
NO SUPER

STA. 219+64 - LT.  
CONSTRUCT APPROACH = XX CU. YDS.

STA. 117+00 - RT.  
CONSTRUCT APPROACH = XX CU. YDS.  
STA. 116+98 - LT.  
CONSTRUCT APPROACH = XX CU. YDS.

STA. 208+45 - LT. CONSTRUCT  
WHEELCHAIR RAMP (TYPE 3) = XX CU. YDS.

STA. 208+91 - LT. CONSTRUCT  
WHEELCHAIR RAMP (TYPE 4) = XX CU. YDS.

STA. 208+92 - LT. CONSTRUCT  
WHEELCHAIR RAMP (TYPE 4) = XX CU. YDS.

STA. 208+95 - LT. CONSTRUCT  
WHEELCHAIR RAMP (TYPE 4) = XX CU. YDS.

STA. 209+74 - LT. CONSTRUCT  
WHEELCHAIR RAMP (TYPE 4) = XX CU. YDS.

STA. 209+75 - LT. CONSTRUCT  
WHEELCHAIR RAMP (TYPE 4) = XX CU. YDS.

STA. 209+80 - LT. CONSTRUCT  
WHEELCHAIR RAMP (TYPE 4) = XX CU. YDS.

STA. 210+15 - LT. CONSTRUCT  
WHEELCHAIR RAMP (TYPE 3) = XX CU. YDS.

STA. 216+06 - RT.  
CONSTRUCT APPROACH = XX CU. YDS.

STA. 219+69 - RT.  
CONSTRUCT APPROACH = XX CU. YDS.

P. I. = 209+36.21  
 $\Delta$  = 0°27'46" LT.  
D = 0°30'00"  
T = 46.28'  
L = 92.56'  
P.C. = 208+89.93  
P.T. = 209+82.49  
NO SUPER

STA. 208+75 - RT. CONSTRUCT  
WHEELCHAIR RAMP (TYPE 3) = XX CU. YDS.

STA. 208+95 - RT. CONSTRUCT  
WHEELCHAIR RAMP (TYPE SPECIAL) = XX CU. YDS.

STA. 209+55 - RT. CONSTRUCT  
WHEELCHAIR RAMP (TYPE 4) = XX CU. YDS.

STA. 209+60 - RT. CONSTRUCT  
WHEELCHAIR RAMP (TYPE 4) = XX CU. YDS.

STA. 209+70 - RT. CONSTRUCT  
WHEELCHAIR RAMP (TYPE 4) = XX CU. YDS.

STA. 209+85 - RT. CONSTRUCT  
WHEELCHAIR RAMP (TYPE 3) = XX CU. YDS.

STA. 111+70.00  
BEGIN S.W. RAINBOW LN.

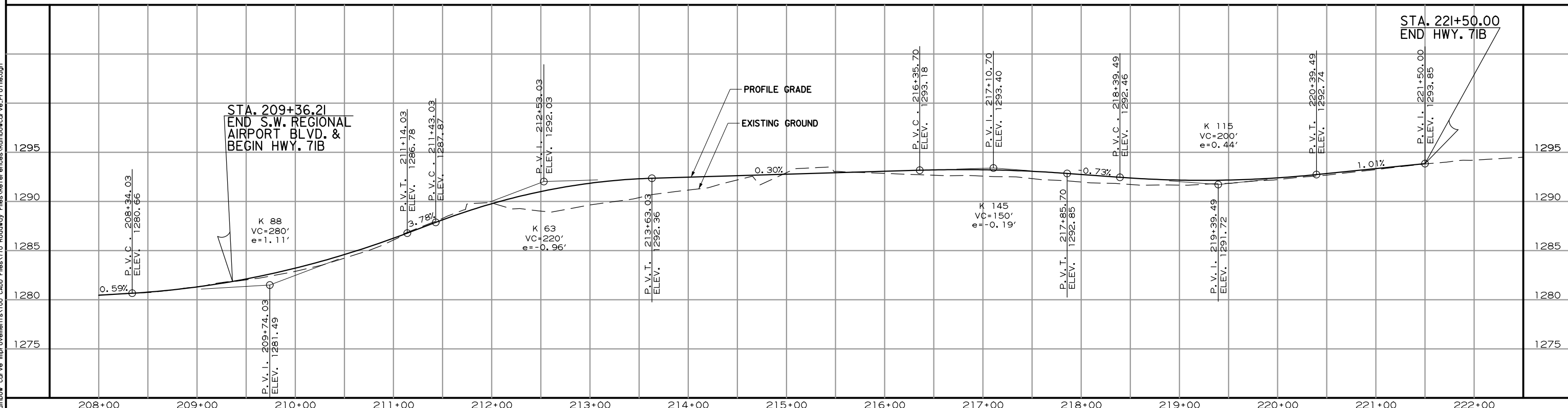
PLAN  
STA. 208+00 TO STA. 221+50

I:\Jobs\03545500 Bentonville Rainbow Curve Improvements\100 CAD Files\710 Roadway Files\References\RainbowCurve\_Plan.dgn  
7/8/2022 1:48:56 PM

DATE REVISED	DATE REVISED	FED. RD. DIST. NO.	STATE	JOB NO.	SHEET NO.	TOTAL SHEETS
		6	ARK.	21ST0005	6	
PROFILE STA. 208+00 TO STA. 221+50						

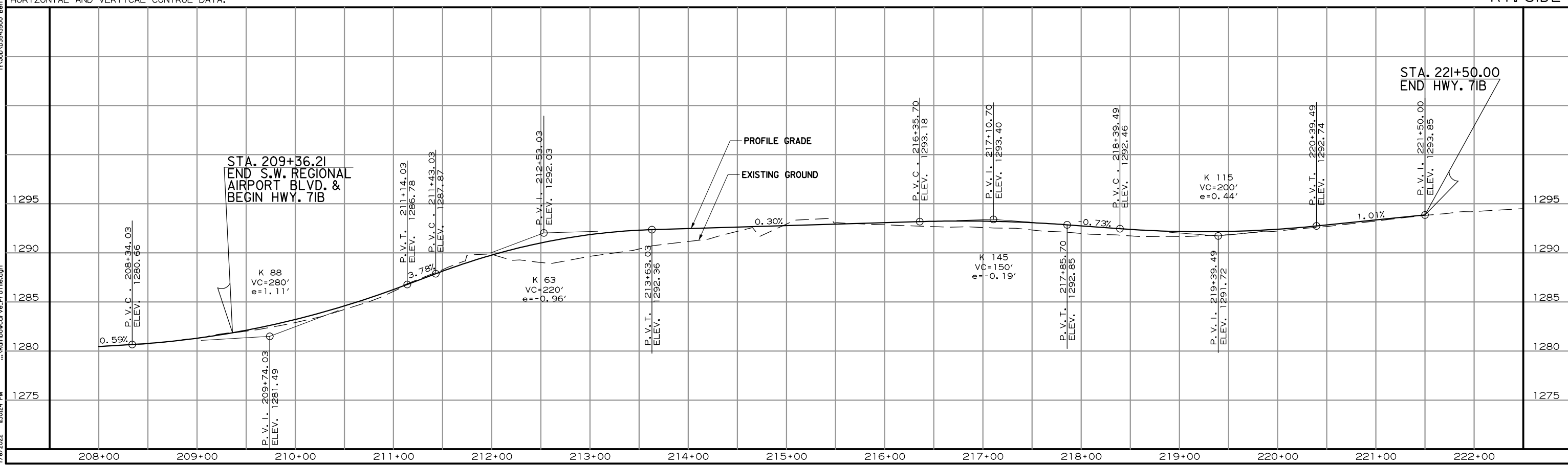
**PRELIMINARY**  
SUBJECT TO REVISION

LT. SIDE



REFER TO SURVEY CONTROL DETAIL SHEETS FOR HORIZONTAL AND VERTICAL CONTROL DATA.

RT. SIDE

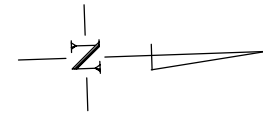


T:\Job\03543500 Bentonville Rainbow Curve Improvements\700 CADD Files\770 Roadway Files\References\RainbowCurve\_Profile.dgn

7/8/2022 1:30:24 PM ...RainbowCurve\_Profile.dgn

DATE REVISED	DATE REVISED	FED. RD. DIST. NO.	STATE	JOB NO.	SHEET NO.	TOTAL SHEETS
		6	ARK.	21ST0005	7	
PLAN STA. III+00 TO STA. I26+00						

**PRELIMINARY**  
SUBJECT TO REVISION



OBLITERATION OF EXIST. PAVEMENT

STA. I21+05 - LT. CONSTRUCT APPROACH = XX CU. YDS.

STA. I21+76 - LT. CONSTRUCT APPROACH = XX CU. YDS.

STA. I07+49 - LT. CONSTRUCT APPROACH = XX CU. YDS.

STA. I23+24 - LT. CONSTRUCT APPROACH = XX CU. YDS.

STA. I23+73 - LT. CONSTRUCT APPROACH = XX CU. YDS.

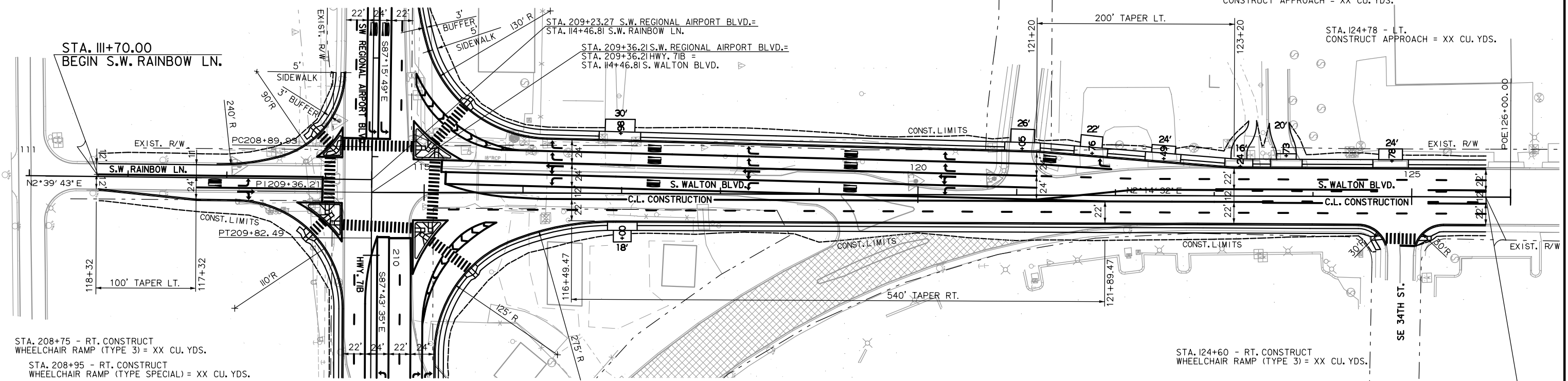
STA. I24+78 - LT. CONSTRUCT APPROACH = XX CU. YDS.

STA. I16+98 - LT. CONSTRUCT APPROACH = XX CU. YDS.

STA. 209+23.27 S.W. REGIONAL AIRPORT BLVD.=  
STA. I14+46.81 S.W. RAINBOW LN.

STA. 209+36.21 S.W. REGIONAL AIRPORT BLVD.=  
STA. 209+36.21 HWY. 71B =  
STA. I14+46.81 S. WALTON BLVD.

STA. III+70.00  
BEGIN S.W. RAINBOW LN.



STA. 208+75 - RT. CONSTRUCT WHEELCHAIR RAMP (TYPE 3) = XX CU. YDS.

STA. 208+95 - RT. CONSTRUCT WHEELCHAIR RAMP (TYPE SPECIAL) = XX CU. YDS.

STA. 209+55 - RT. CONSTRUCT WHEELCHAIR RAMP (TYPE 4) = XX CU. YDS.

STA. 209+60 - RT. CONSTRUCT WHEELCHAIR RAMP (TYPE 4) = XX CU. YDS.

STA. 209+70 - RT. CONSTRUCT WHEELCHAIR RAMP (TYPE 4) = XX CU. YDS.

STA. 209+85 - RT. CONSTRUCT WHEELCHAIR RAMP (TYPE 3) = XX CU. YDS.

STA. 208+45 - LT. CONSTRUCT WHEELCHAIR RAMP (TYPE 3) = XX CU. YDS.

STA. 208+91 - LT. CONSTRUCT WHEELCHAIR RAMP (TYPE 4) = XX CU. YDS.

STA. 208+92 - LT. CONSTRUCT WHEELCHAIR RAMP (TYPE 4) = XX CU. YDS.

STA. 208+95 - LT. CONSTRUCT WHEELCHAIR RAMP (TYPE 4) = XX CU. YDS.

STA. 209+74 - LT. CONSTRUCT WHEELCHAIR RAMP (TYPE 4) = XX CU. YDS.

STA. 209+75 - LT. CONSTRUCT WHEELCHAIR RAMP (TYPE 4) = XX CU. YDS.

STA. 209+80 - LT. CONSTRUCT WHEELCHAIR RAMP (TYPE 4) = XX CU. YDS.

STA. 210+15 - LT. CONSTRUCT WHEELCHAIR RAMP (TYPE 3) = XX CU. YDS.

STA. I17+00 - RT. CONSTRUCT APPROACH = XX CU. YDS.

STA. I24+60 - RT. CONSTRUCT WHEELCHAIR RAMP (TYPE 3) = XX CU. YDS.

STA. I25+15 - RT. CONSTRUCT WHEELCHAIR RAMP (TYPE 3) = XX CU. YDS.

STA. I25+75.00  
END S. WALTON BLVD.

I:\Job\03543500 Bentonville Rainbow Curve Improvements\100 CAD Files\170 Roadway Files\References\RainbowCurve\_Plan.dgn 7/8/2022 1:54:35 PM

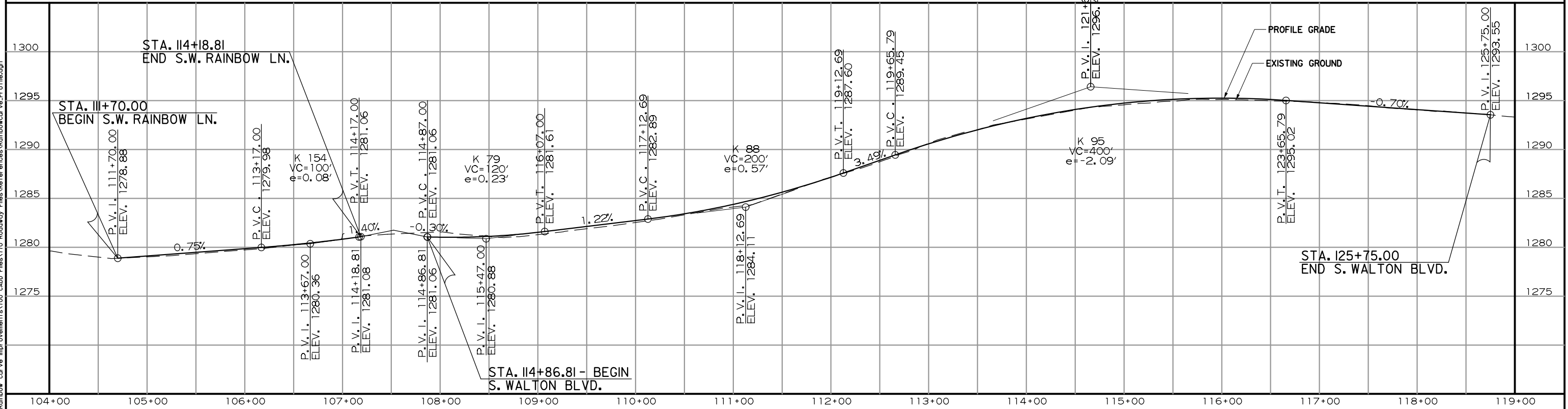
REFER TO SURVEY CONTROL DETAIL SHEETS FOR HORIZONTAL AND VERTICAL CONTROL DATA.

PLAN - S. WALTON BLVD.  
STA. III+00 TO STA. I26+00

DATE REVISED	DATE REVISED	FED. RD. DIST. NO.	STATE	JOB NO.	SHEET NO.	TOTAL SHEETS
		6	ARK.	21ST0005	8	
PROFILE STA. 106+00 TO STA. 118+40						

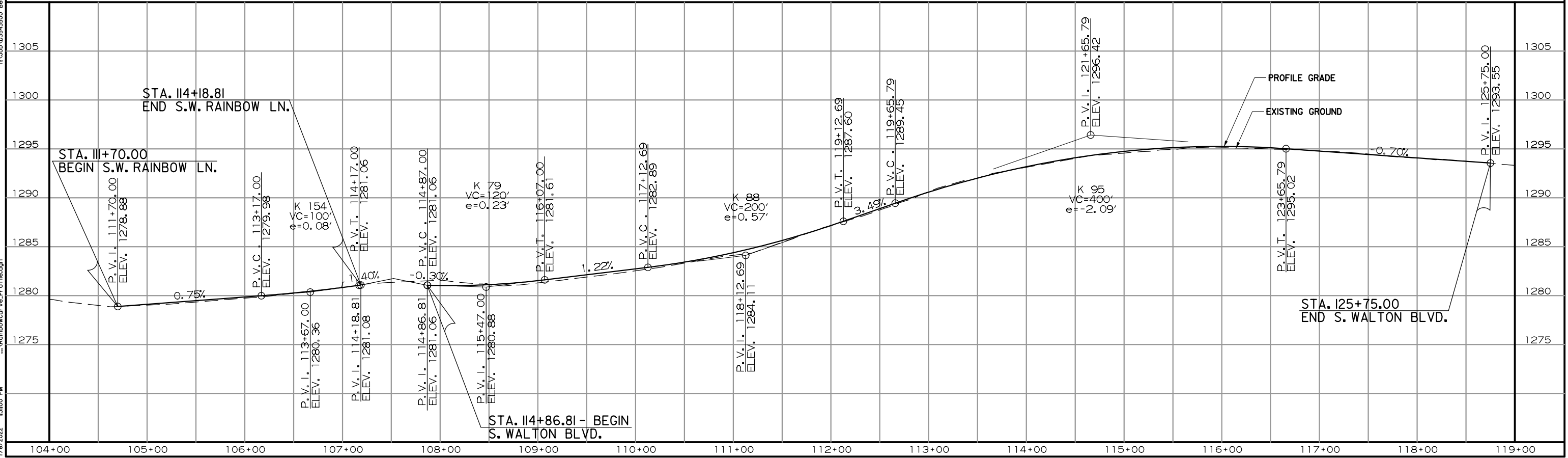
**PRELIMINARY**  
SUBJECT TO REVISION

LT. SIDE



REFER TO SURVEY CONTROL DETAIL SHEETS FOR HORIZONTAL AND VERTICAL CONTROL DATA.

RT. SIDE

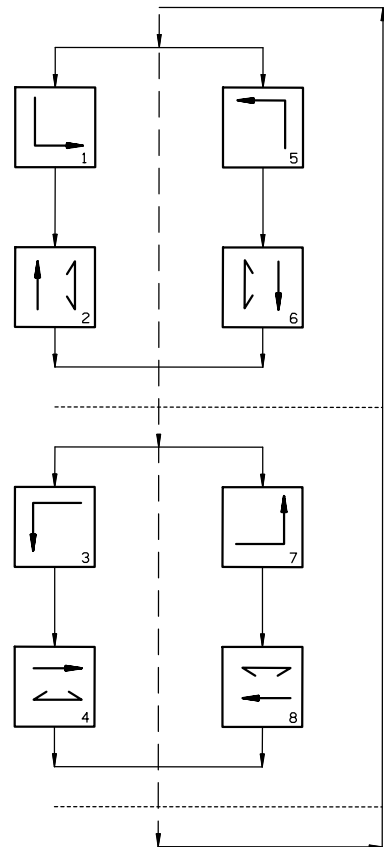


T:\Job\03543500 Bentonville Rainbow Curve Improvements\100 CADD Files\770 Roadway Files\References\RainbowCurveProfile.dgn 7/8/2022 1:30:00 PM

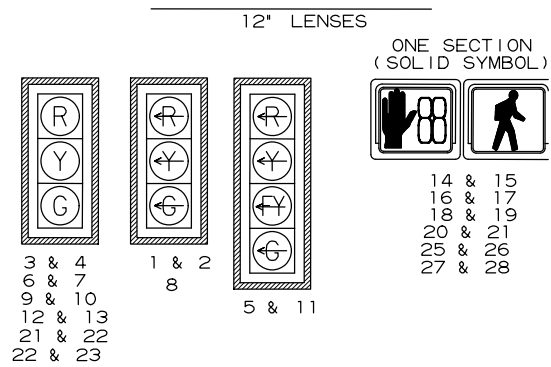


DATE REVISED	DATE REVISED	FED. RD. DIST. NO.	STATE	JOB NO.	SHEET NO.	TOTAL SHEETS
		6	ARK.	21ST0005		
SIGNALIZATION PLAN SHEET						

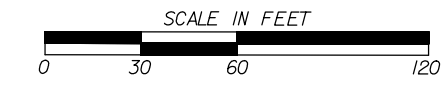
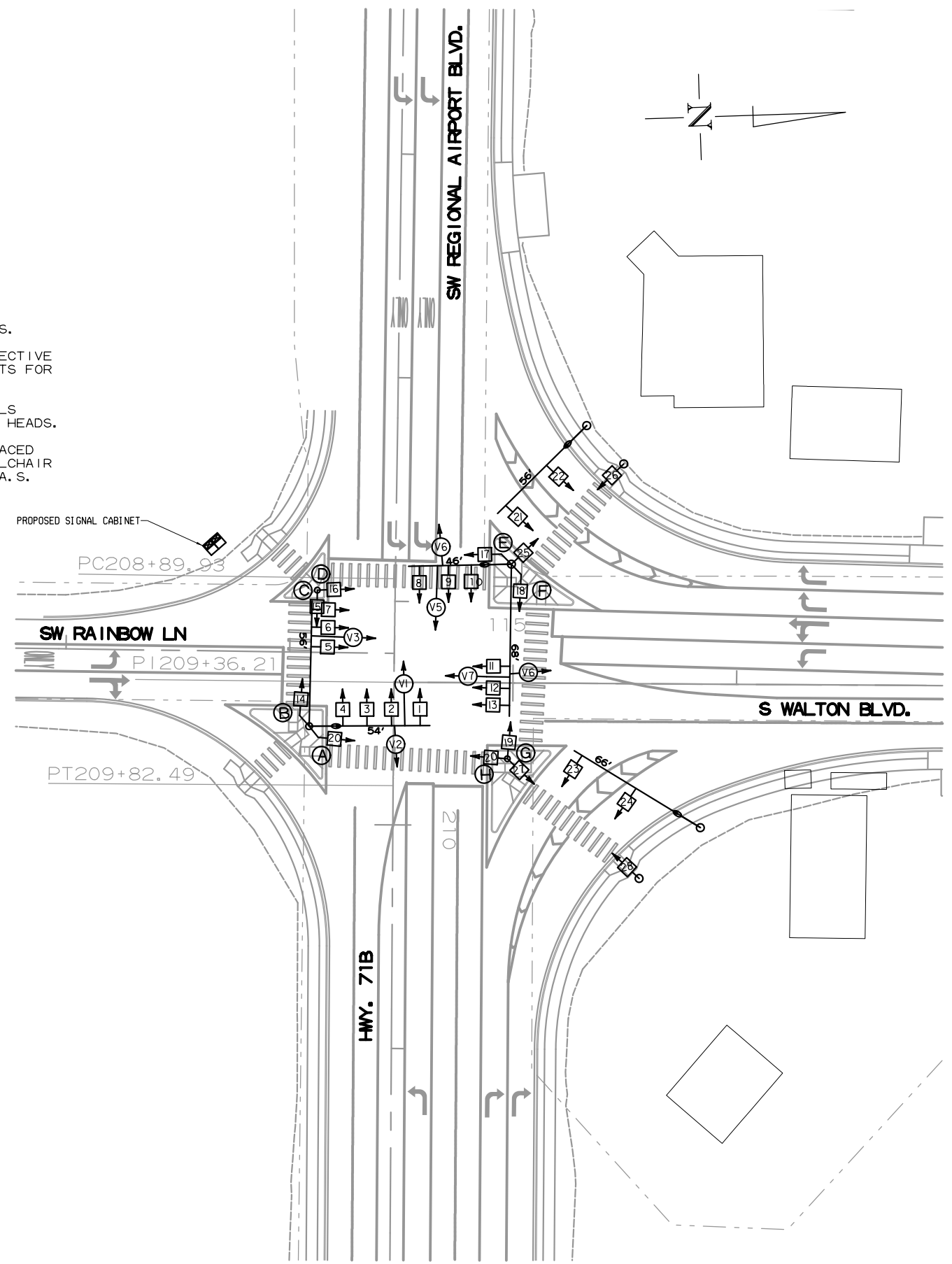
### PHASING DIAGRAM



### SIGNAL FACES



- NOTES:
1. ALL SIGNAL HEADS SHALL HAVE BACKPLATES.
  2. REFER TO SPECIAL PROVISION "RETROREFLECTIVE BACKPLATES" FOR DETAILS ON REQUIREMENTS FOR BACKPLATES.
  3. REFER TO SPECIAL PROVISIONS FOR DETAILS ON REQUIREMENTS FOR PEDESTRIAN SIGNAL HEADS.
  4. ALL PEDESTRIAN SIGNAL HEADS CAN BE PLACED INTO OPERATION IF THERE ARE BOTH WHEELCHAIR RAMPS AND A CROSSWALK THAT MEETS A. D. A. S. STANDARD.



DATE: 07-7-2022 FILE NAME: 21ST0005-Traffic Signal 60scalE.dgn

PRELIMINARY  
SUBJECT TO REVISION

LOCATION: RAINBOW CURVE IMPROVEMENTS  
 CITY: bentonville  
 COUNTY: benton  
 SCALE: 1"=60' DRAWN BY: PCH