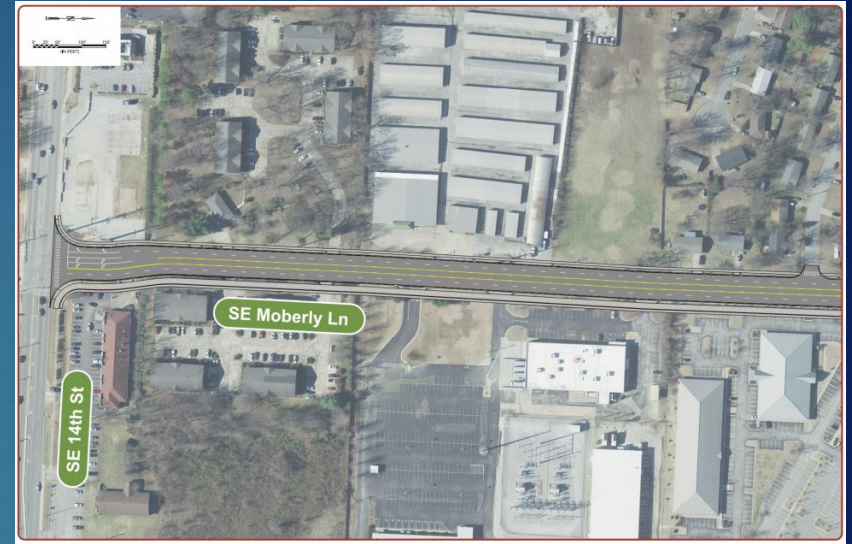


# SE Moberly Lane – SE 14<sup>th</sup> to SE 8<sup>th</sup>

Project Status Update 22JUL22

## Project Schedule

Design N-T-P:	28JUN21
30% Plans:	29OCT21
60% Plans:	29JUL22
90% Plans:	28OCT22
Begin Construction:	03JAN23
Planned Completion:	05JAN24



## Notes

30% plans submitted for review.

## Project Contacts

City of Bentonville: Andrea Jobe, P.E.

[ajobe@bentonvillear.com](mailto:ajobe@bentonvillear.com)

Engineer: Bill Burnett, P.E.

Contractor: TBD

## Action Items

- ❑ Coordinating with Walter P Moore engineers on SE 8<sup>th</sup> and SE 14<sup>th</sup> intersections.
- ❑ Need additional utility locates for recent UGE and OHE power installations.