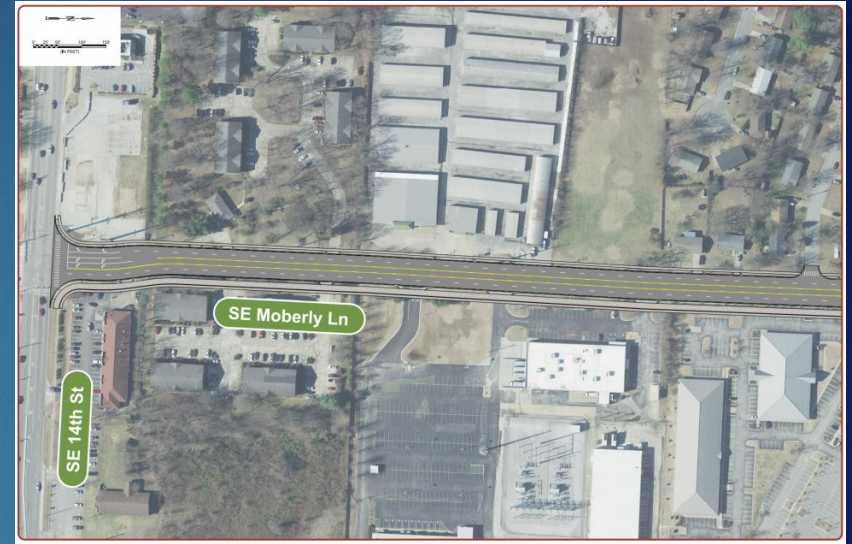


SE Moberly Lane – SE 14th to SE 8th

Project Status Update 06MAY22

Project Schedule

Design N-T-P:	28JUN21
30% Plans:	29OCT21
60% Plans:	29JUL22
90% Plans:	28OCT22
Begin Construction:	03JAN23
Planned Completion:	05JAN24



Notes

30% plans submitted for review.

Project Contacts

City of Bentonville: Andrea Jobe, P.E.

ajobe@bentonvillear.com

Engineer: Bill Burnett, P.E.

Contractor: TBD

Action Items

- Need comments on 30% plans to proceed with 60% design.
- Coordinating with Walter P Moore engineers on SE 8th and SE 14th intersections.