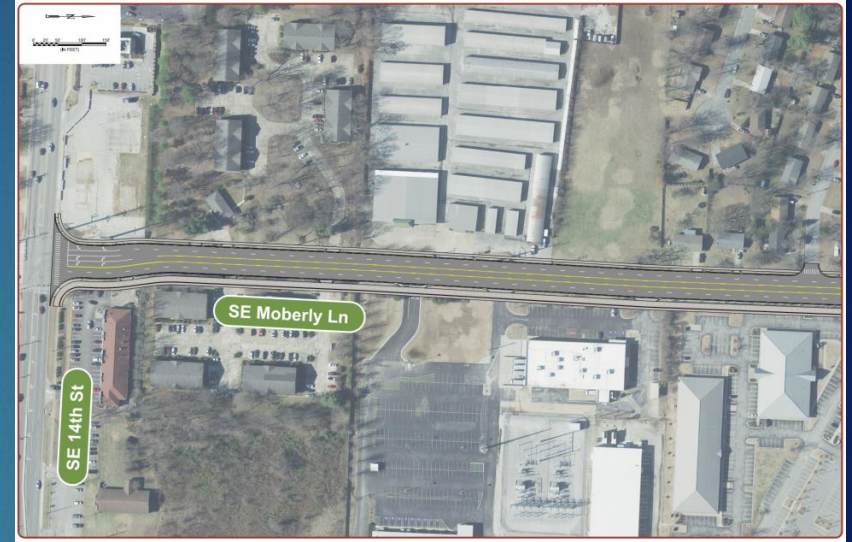


SE Moberly Lane – SE 14th to SE 8th

Project Status Update 18NOV22

Project Schedule

Design N-T-P:	28JUN21
30% Plans:	29OCT21
60% Plans:	28OCT22
90% Plans:	27JAN23
Begin Construction:	02APR23
Planned Completion:	29MAR24



Notes

60% plans submitted for review.

Project Contacts

City of Bentonville: Andrea Jobe, P.E.

ajobe@bentonvillear.com

Engineer: Bill Burnett, P.E.

Contractor: TBD

Action Items

- Need comments on 60% plans and authorization to proceed with 90% plans.
- Coordinate with utility companies on relocation designs and easement needs.
- Prepare R/W and easement documents.
- Coordinating with Walter P Moore engineers on SE 8th and SE 14th intersections.
- Coordinating with AEP on new overhead electric transmission pole locations.
- Need additional utility locates for recent UGE and OHE power installations.