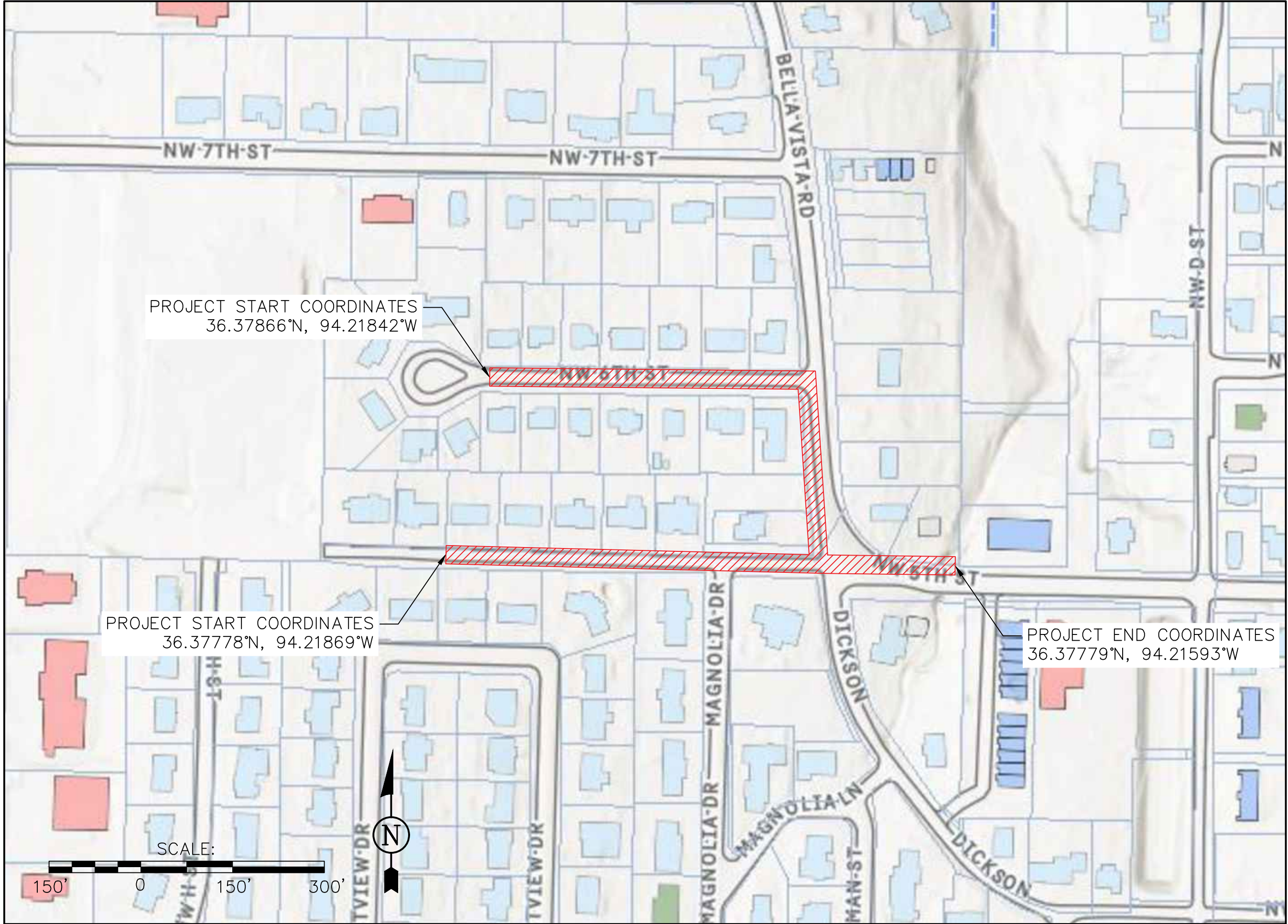


NW 5TH & BELLA VISTA DRAINAGE IMPROVEMENTS CITY OF BENTONVILLE BENTONVILLE, ARKANSAS

APRIL 2022



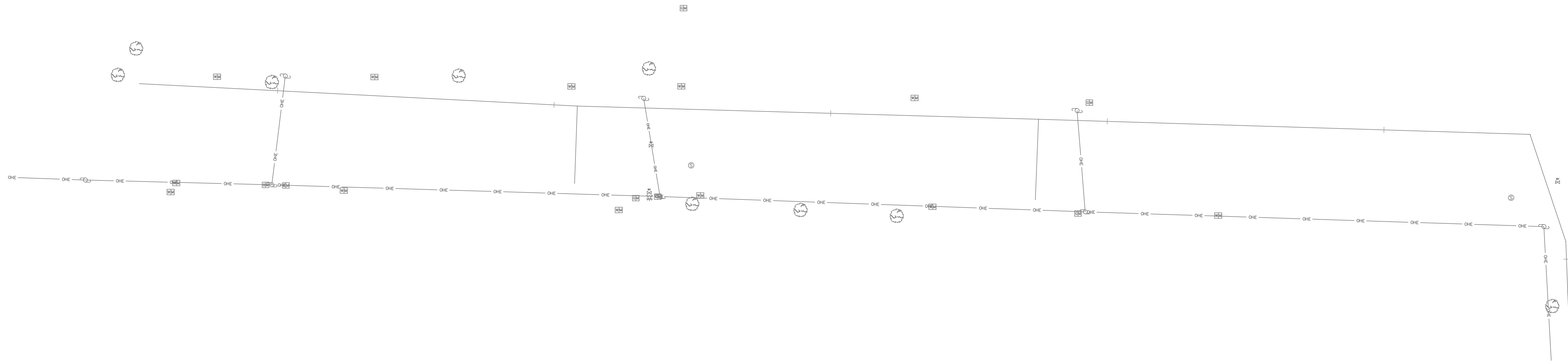
| INDEX OF DRAWINGS | |
|-------------------|------------------------------|
| SHEET # | SHEET TITLE |
| C1 | COVER SHEET |
| C2 | GENERAL NOTES AND QUANTITIES |
| C3 | PLAN SHEET |
| C4 | PLAN AND PROFILE SHEET (1) |
| C5 | PLAN AND PROFILE SHEET (2) |
| C6 | PLAN AND PROFILE SHEET (3) |
| C7 | PLAN AND PROFILE SHEET (4) |
| | |
| | |
| | |
| | |
| | |
| | |
| | |
| | |
| | |
| | |
| | |
| | |
| | |



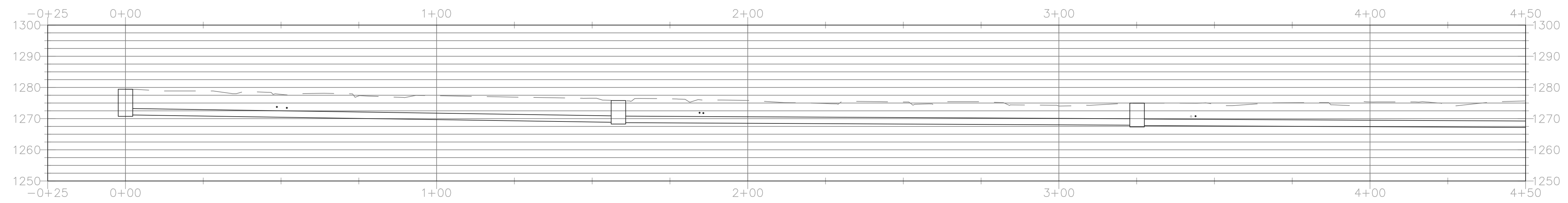
PROJECT NO. BENV-12307



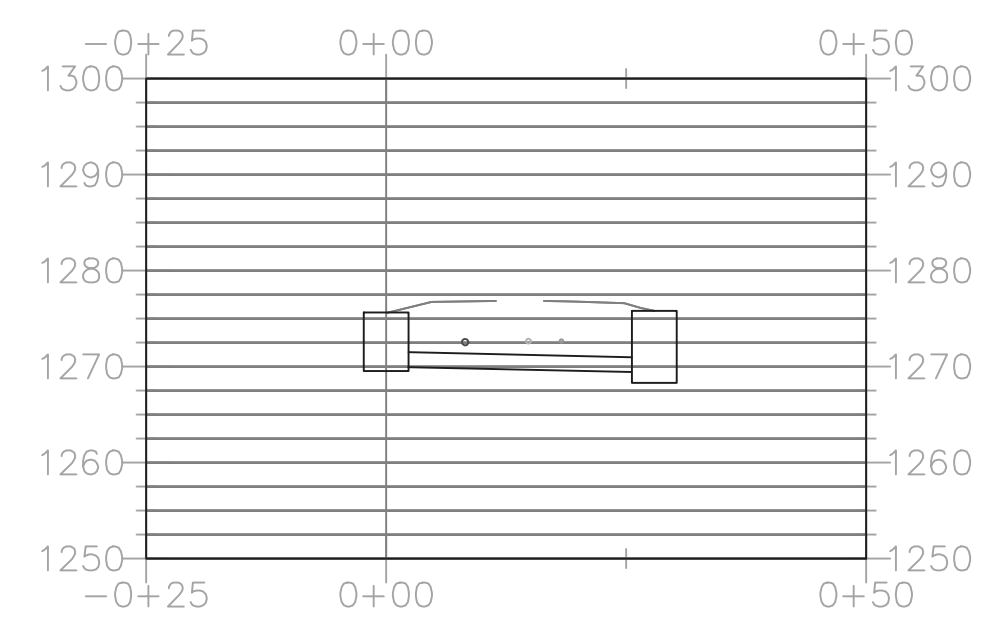
SCHEMATIC REVIEW



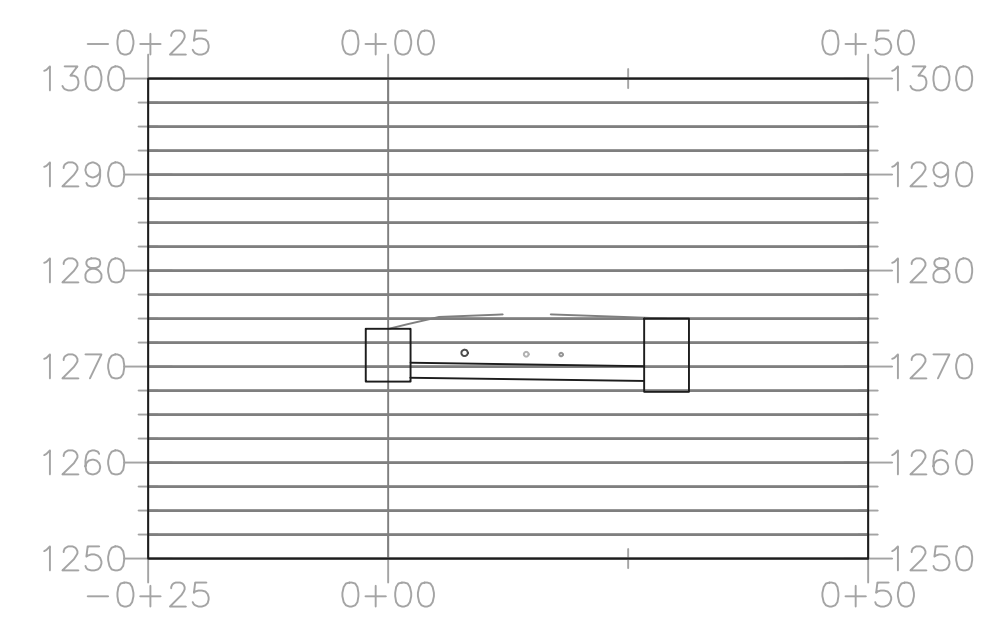
STM-1 PROFILE STA. 0+00.00 TO 4+50



STM-2 PROFILE



STM-3 PROFILE



SUBMITTED FOR REVIEW

PLAN AND PROFILE SHEET (2)

DRAINAGE IMPROVEMENTS
NW 5TH & BELLA VISTA
CITY OF BENTONVILLE
BENTONVILLE, ARKANSAS

SHEET TITLE:

PROJECT TITLE:

REVISIONS:

NO. DATE DESCRIPTION

BY:

DATE:

NO.

DATE:

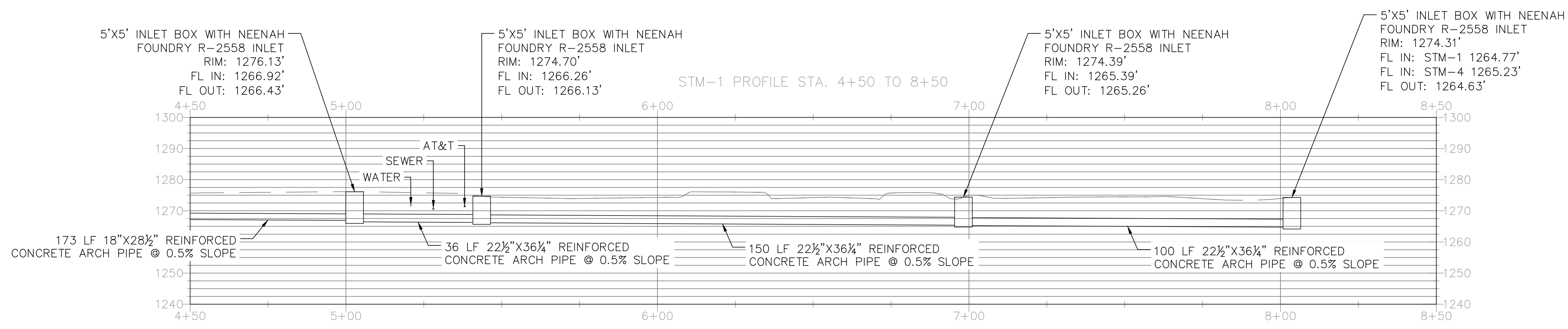
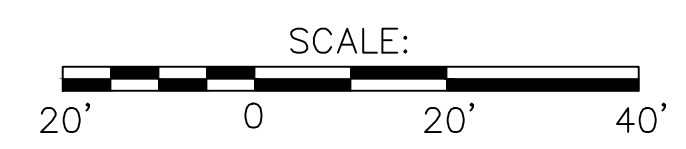
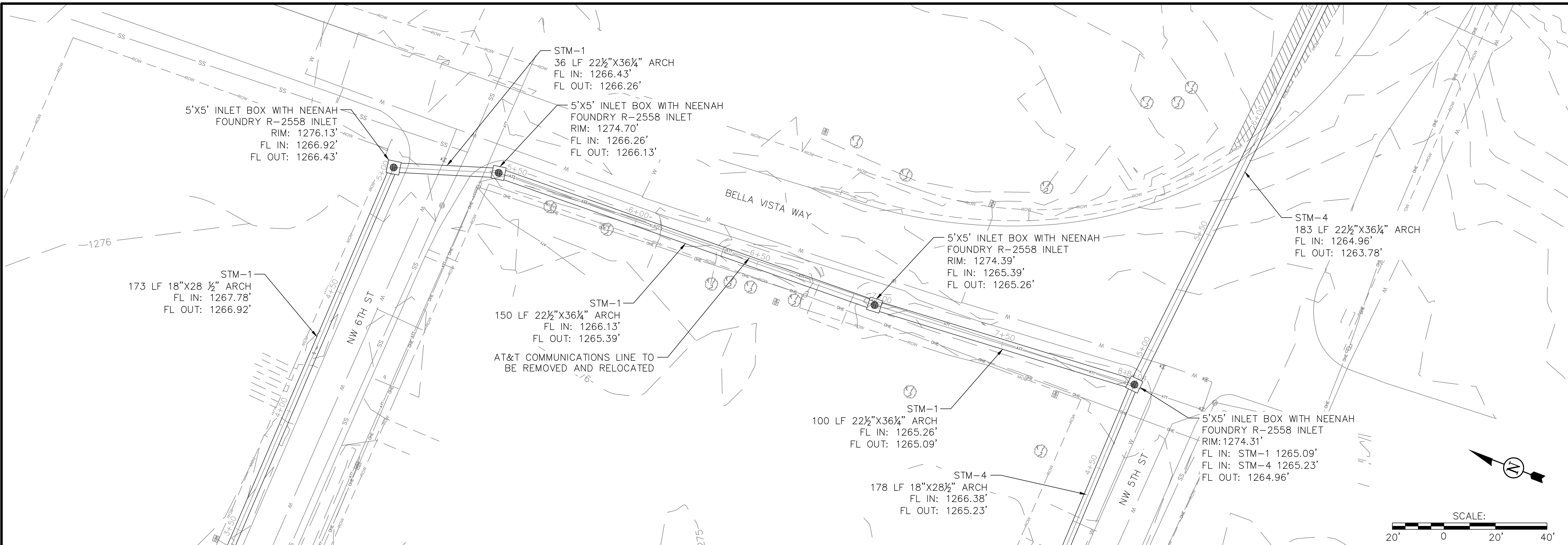
SCALE:

AS NOTED

CIVIL ENGINEERING AND ENVIRONMENTAL SERVICES
3612 SOUTH SHACKLEFORD RD
LITTLE ROCK, ARKANSAS 72205
PH: (501) 221-7122 FX: (501) 221-7775
DESIGNED BY: CTG DATE: APR. 15, 2022
DRAWN BY: CTG SCALE: AS NOTED
CHECKED BY: BJW
FILE: N:\BENTONVILLE CITY OF BENTONVILLE\12307 - NW 5TH AND BELLA VISTA WAY\DRAWINGS\BENV-12307_S02.DWG

JOB NUMBER:
BENV-12307

SHEET NUMBER:
C5



1278
1277

1277-
1278-
1279-
1280-
1281-
1282-
1283-
1284-
1285-
1286-
1287-
1288-
1289-
1290-
1291-
1292-
1293-
1294-
1295-
1296-
1297-
1298-
1299-
1300-

1277
1278
1279
1280
1281
1282
1283
1284
1285
1286
1287
1288
1289
1290
1291
1292
1293
1294
1295
1296
1297
1298
1299
1300

1277
1278
1279
1280
1281
1282
1283
1284
1285
1286
1287
1288
1289
1290
1291
1292
1293
1294
1295
1296
1297
1298
1299
1300

1277
1278
1279
1280
1281
1282
1283
1284
1285
1286
1287
1288
1289
1290
1291
1292
1293
1294
1295
1296
1297
1298
1299
1300

1277
1278
1279
1280
1281
1282
1283
1284
1285
1286
1287
1288
1289
1290
1291
1292
1293
1294
1295
1296
1297
1298
1299
1300

1277
1278
1279
1280
1281
1282
1283
1284
1285
1286
1287
1288
1289
1290
1291
1292
1293
1294
1295
1296
1297
1298
1299
1300

1277
1278
1279
1280
1281
1282
1283
1284
1285
1286
1287
1288
1289
1290
1291
1292
1293
1294
1295
1296
1297
1298
1299
1300

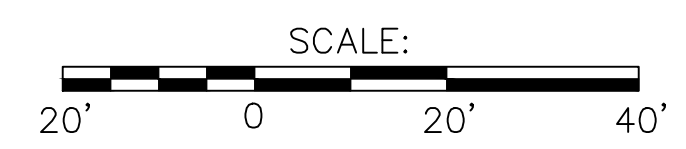
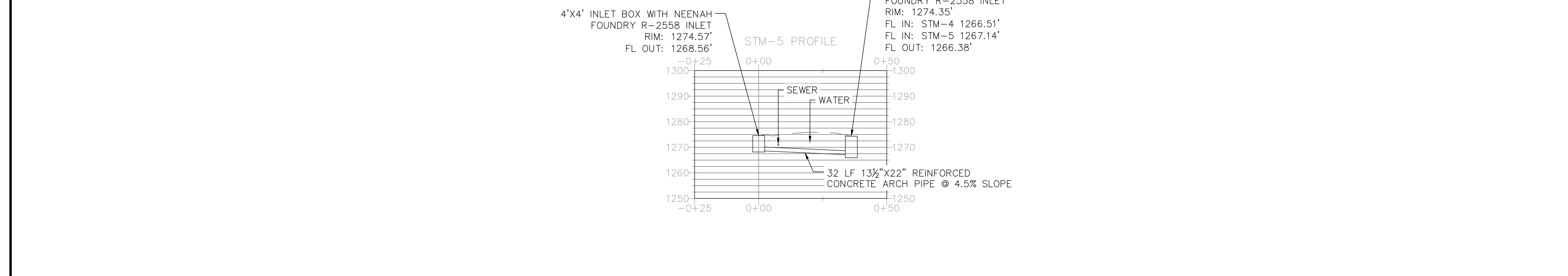
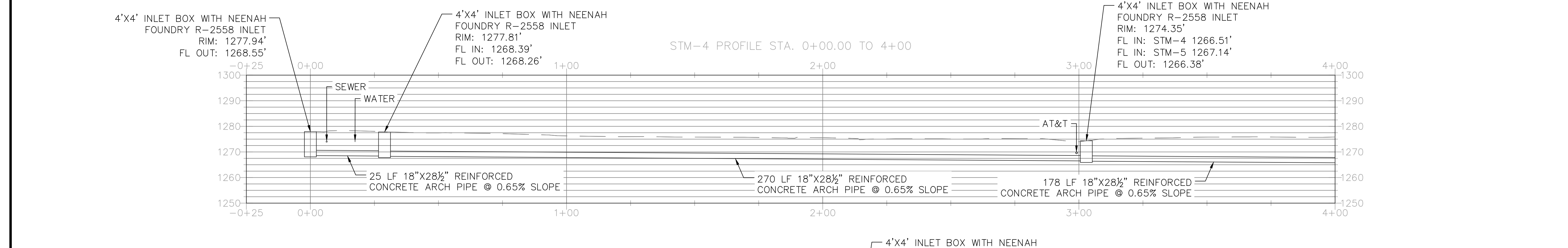
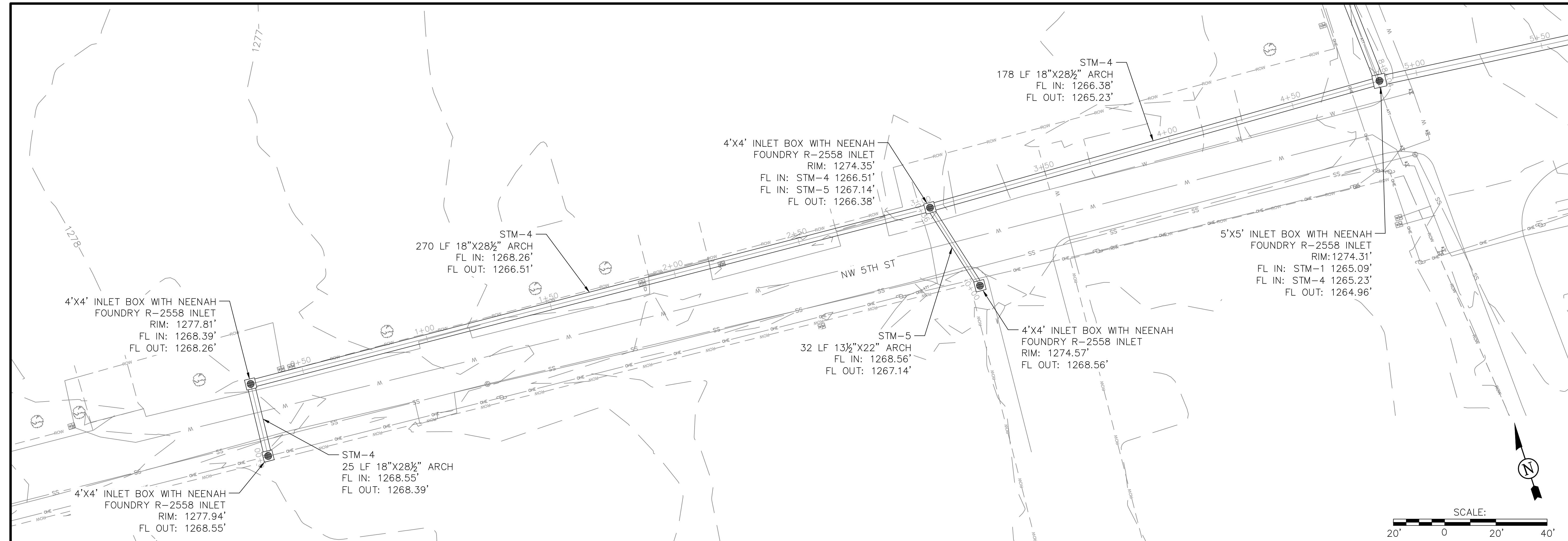
1277
1278
1279
1280
1281
1282
1283
1284
1285
1286
1287
1288
1289
1290
1291
1292
1293
1294
1295
1296
1297
1298
1299
1300

1277
1278
1279
1280
1281
1282
1283
1284
1285
1286
1287
1288
1289
1290
1291
1292
1293
1294
1295
1296
1297
1298
1299
1300

1277
1278
1279
1280
1281
1282
1283
1284
1285
1286
1287
1288
1289
1290
1291
1292
1293
1294
1295
1296
1297
1298
1299
1300

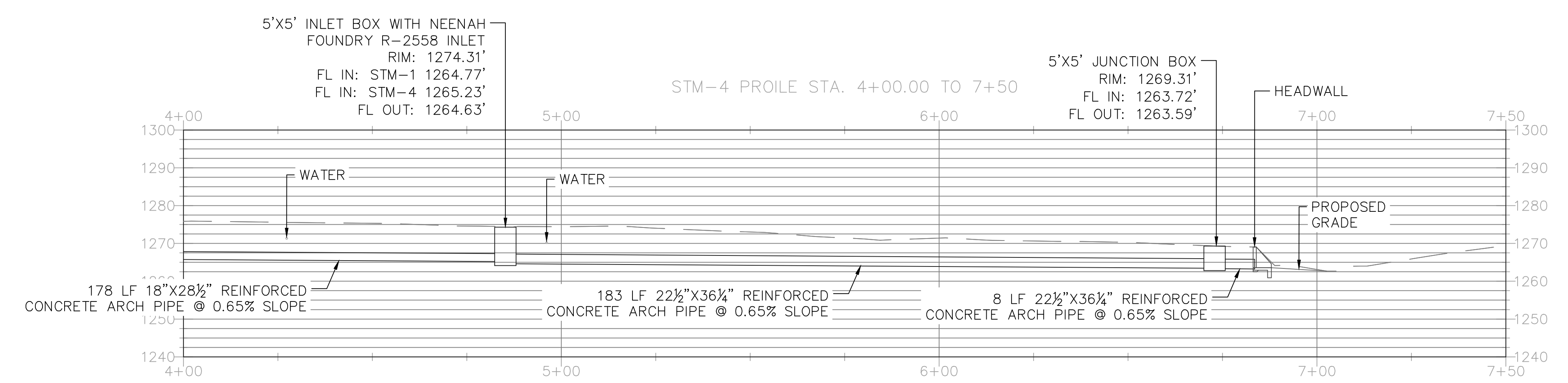
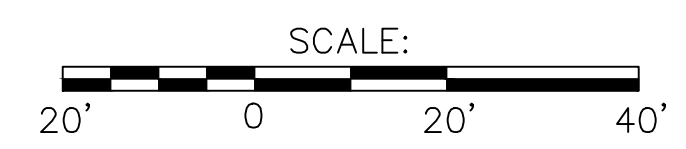
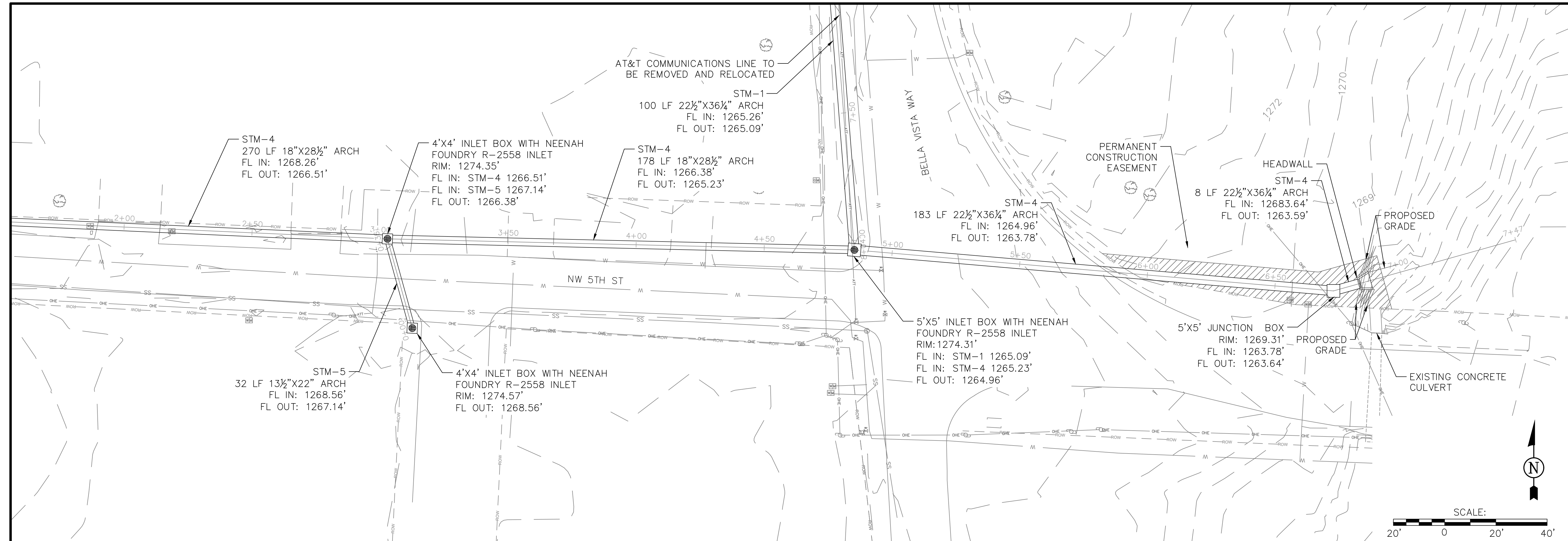
1277
1278
1279
1280
1281
1282
1283
1284
1285
1286
1287
1288
1289
1290
1291
1292
1293
1294
1295
1296
1297
1298
1299
1300

1277
1278
1279
1280
1281
1282
1283
1284
1285
1286
1287
1288
1289
1290
1291
1292
1293
1294
1295
1296
1297
1298
1299
1300



| | | |
|---|---|---|
| SUBMITTED FOR REVIEW | | |
| PLAN AND PROFILE SHEET (3) | | |
| DRAINAGE IMPROVEMENTS NW 5TH & BELLA VISTA CITY OF BENTONVILLE BENTONVILLE, ARKANSAS | | |
| SHEET TITLE: | PLAN AND PROFILE SHEET (3) | |
| PROJECT TITLE: | DRAINAGE IMPROVEMENTS NW 5TH & BELLA VISTA CITY OF BENTONVILLE BENTONVILLE, ARKANSAS | |
| BY: | | |
| DATE: | | |
| NO.: | | |
| DESCRIPTION: | | |
| REVISIONS: | | |
| NO. | DATE | DESCRIPTION |
| | | |
| | | |
| | | |
| | | |
| CIVIL ENGINEERING AND ENVIRONMENTAL SERVICES 3612 SOUTH SHACKLEFORD RD LITTLE ROCK, ARKANSAS 72205 PH: (501) 221-7122 FX: (501) 221-7775 | | DESIGNED BY: CTG DRAWN BY: CTG CHECKED BY: B.W. |
| DATE: APR. 15, 2022 | | SCALE: AS NOTED |
| JOB NUMBER: BENV-12307 | | SHEET NUMBER: C6 |

SUBMITTED FOR REVIEW



SHEET TITLE: PLAN AND PROFILE SHEET (4)

PROJECT TITLE: DRAINAGE IMPROVEMENTS
NW 5TH & BELLA VISTA
CITY OF BENTONVILLE
BENTONVILLE, ARKANSAS

REVISIONS:

| NO. | DATE | BY: | DESCRIPTION: |
|-----|------|-----|--------------|
| | | | |
| | | | |
| | | | |
| | | | |

CIVIL ENGINEERING AND ENVIRONMENTAL SERVICES
3612 SOUTH SHACKLEFORD RD
LITTLE ROCK, ARKANSAS 72205
PH: (501) 221-7122 FX: (501) 221-7775
DESIGNED BY: CTG DATE: APR. 15, 2022
DRAWN BY: CTG SCALE: AS NOTED
CHECKED BY: BJW

JOB NUMBER:
BENV-12307

SHEET NUMBER:
C7