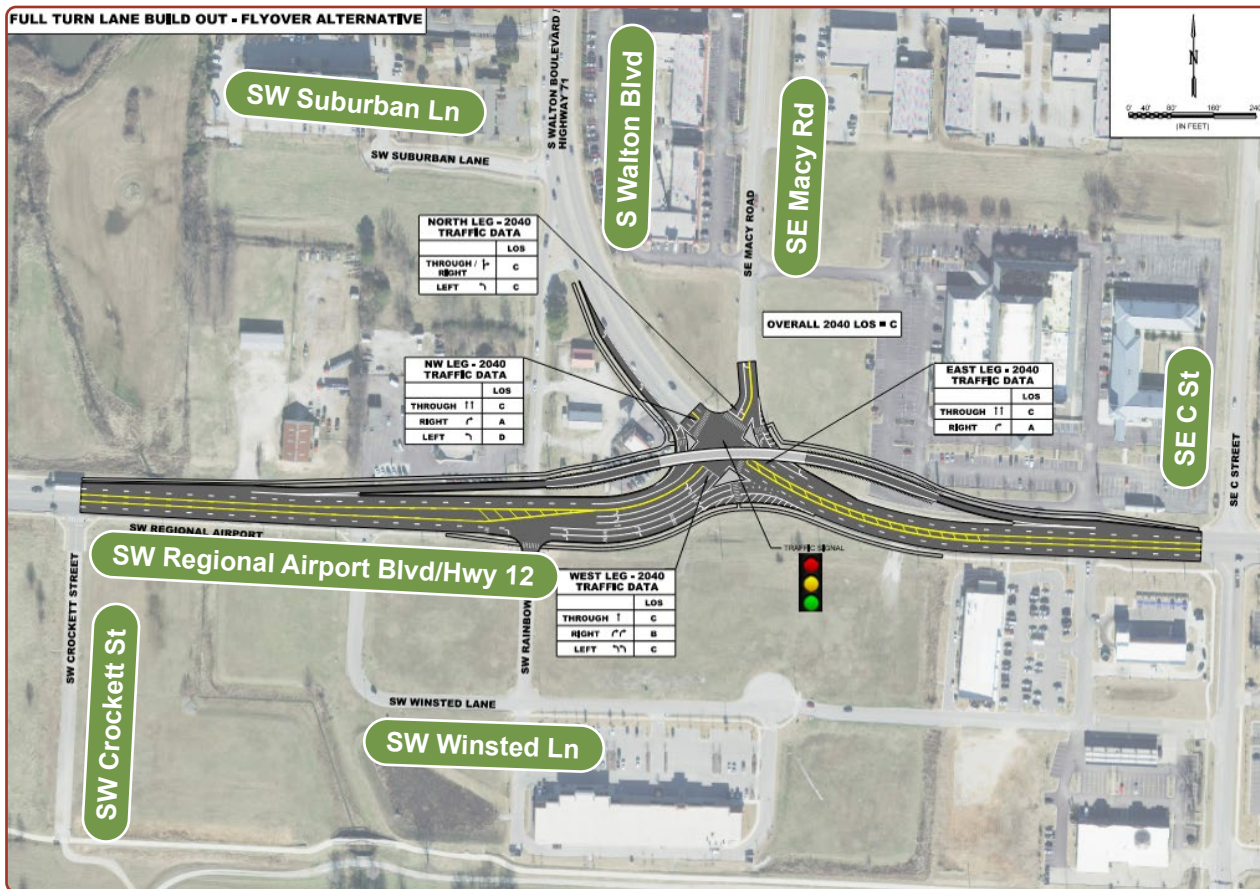




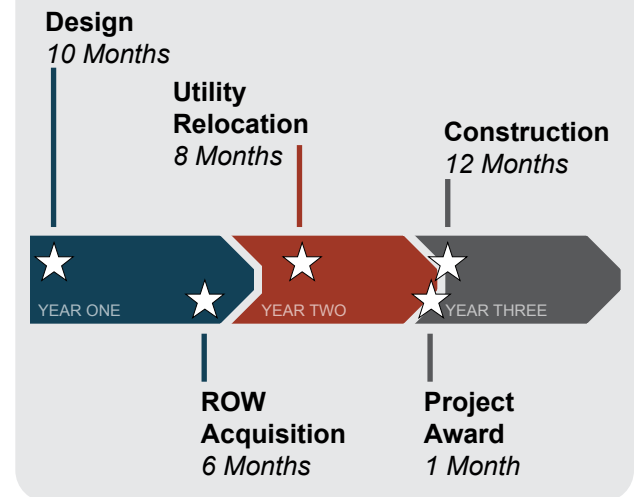
Rainbow Curve Improvements

The existing intersection of Walton Boulevard and Highway 12, commonly known as Rainbow Curve, currently has an overall intersection LOS E, which will continue to deteriorate to an LOS F prior to the 2040 Design Year. The recommended improvements primarily consist of installing a flyover bridge to remove the westbound, left-turning traffic from the intersection. With the recommended improvements, an LOS C will be achieved for the projected 2040 traffic.

Project Exhibit



Project Timeline



Estimated Costs

Task	Estimated Cost
Design/CE&I	\$ 980,000
ROW Acquisition	\$ 700,000
Utility Relocation	\$ 700,000
Construction	\$ 4,900,000
Total	\$ 7,280,000